

# Patternmaker

100% Pure New Wool | 4 Designs



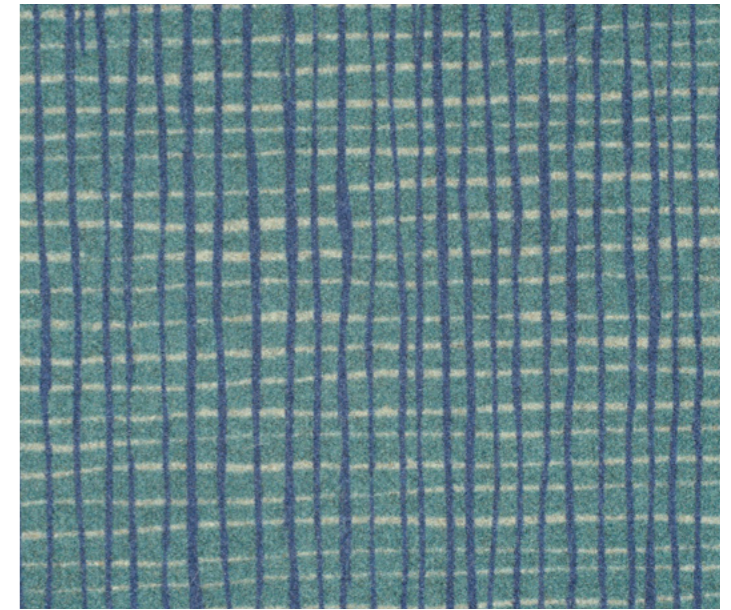
**camira**



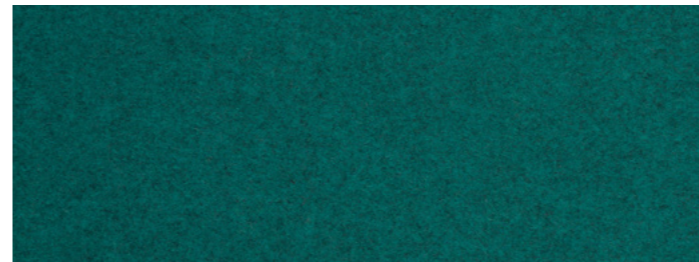
Using state-of-the-art digital printing technology and created in collaboration with renowned textile designer, Kate Lawrie, Patternmaker's four contemporary designs, Crosshatch, Dot Dash, Hula and Speckle, are brought to life on our 100% pure new wool felted fabric. Blending sustainability with style, Patternmaker's cool-toned grays, warm honey-browns, rich earthy terracotta shades and restorative green and blue hues inject personality into hospitality, contract and residential settings.



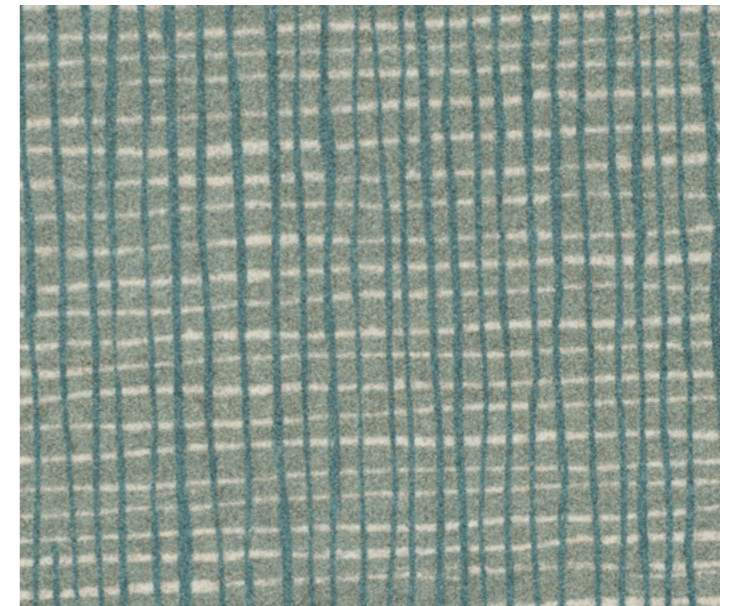
**Dot Dash**  
PMD12



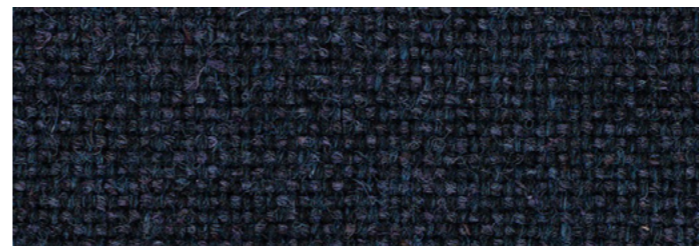
**Crosshatch**  
PMC14



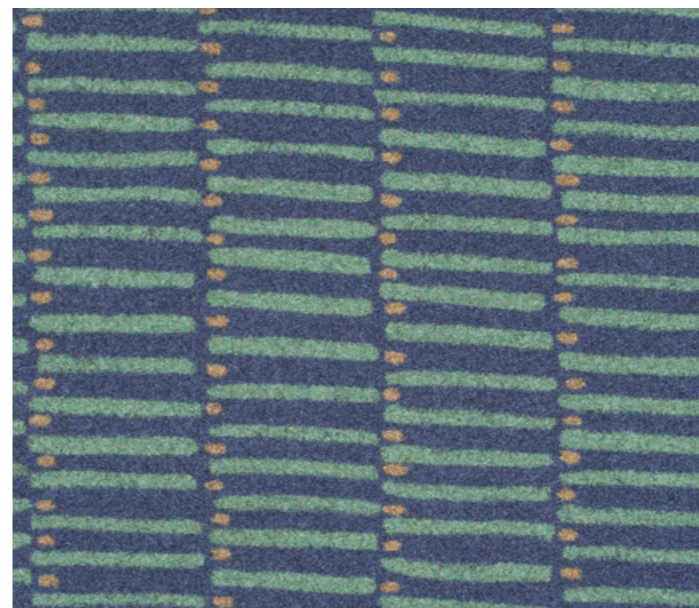
**Blazer**  
Bodmin, CUZ4F



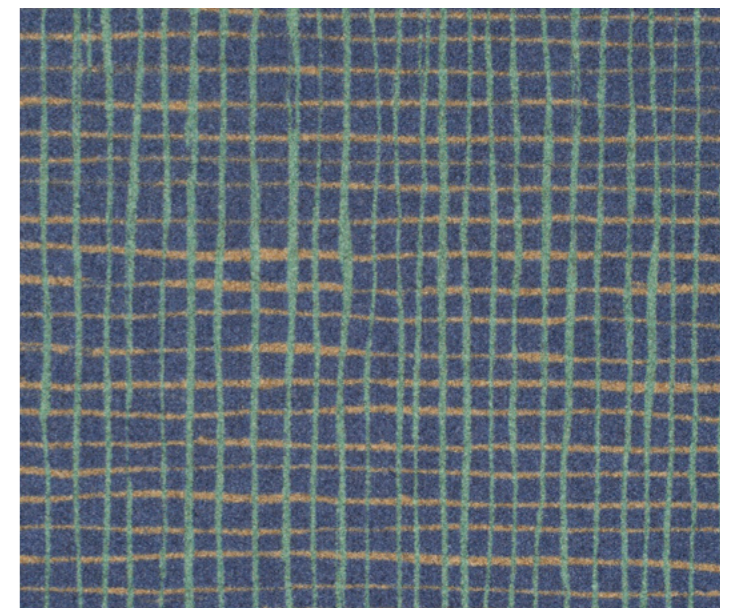
**Crosshatch**  
PMC15



**Main Line Flax**  
Tower, MLF36



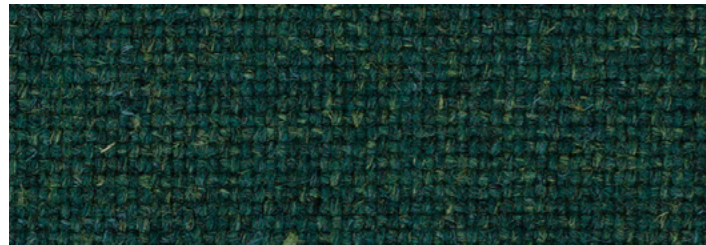
**Dot Dash**  
PMD13



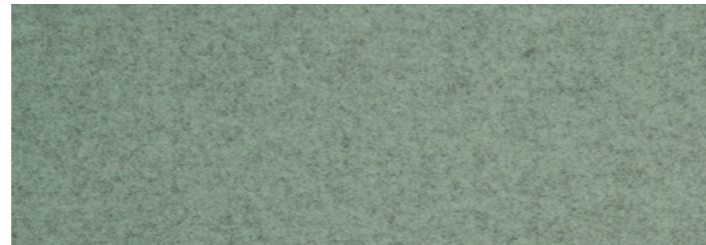
**Crosshatch**  
PMC13



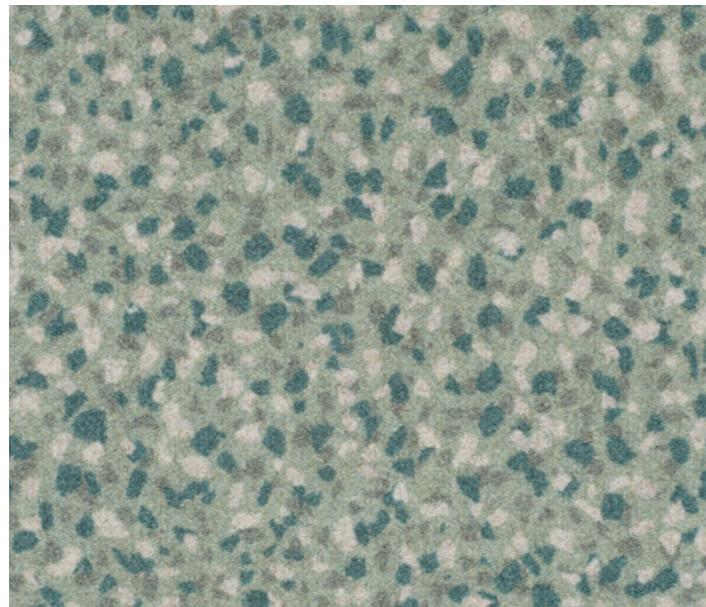
**Hula**  
PMH07



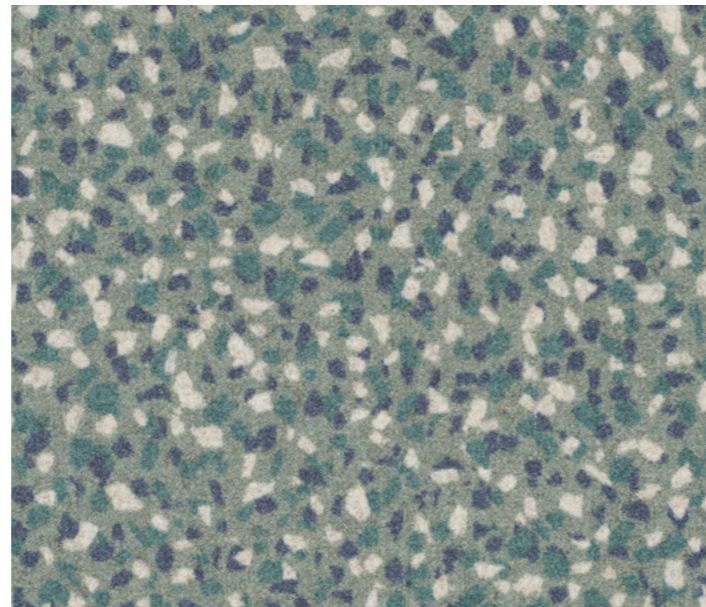
**Main Line Flax**  
Hornchurch, MLF55



**Blazer**  
Moray, CUZ4K



**Speckle**  
PMS12

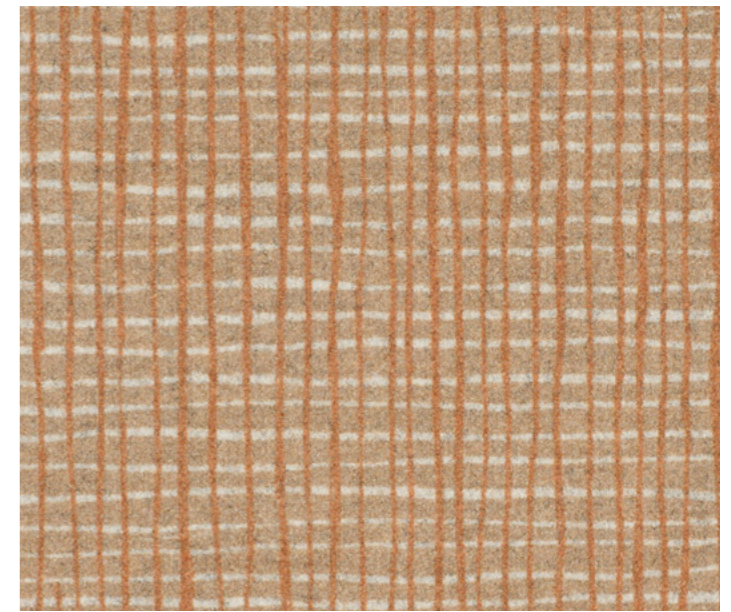


**Speckle**  
PMS13

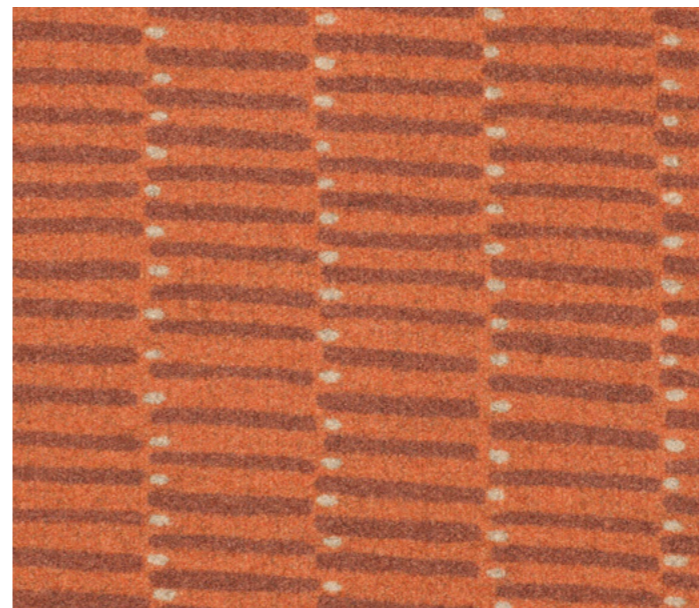




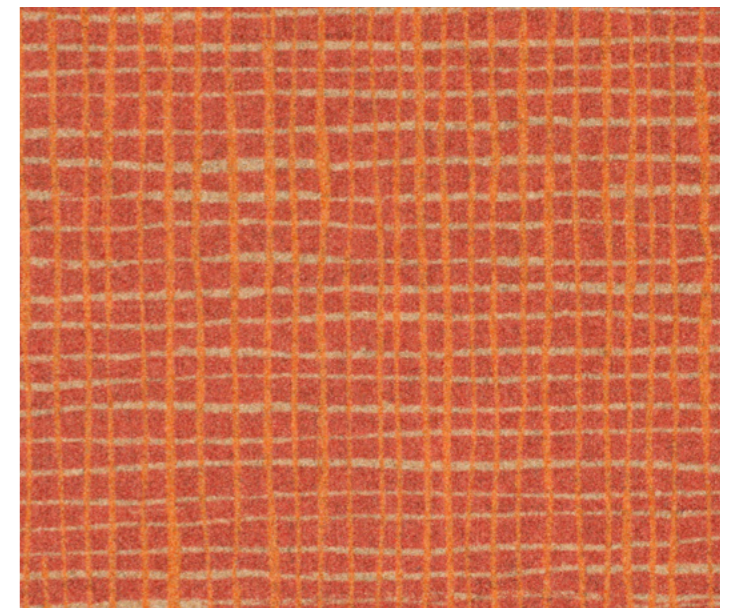
**Dot Dash**  
PMD15



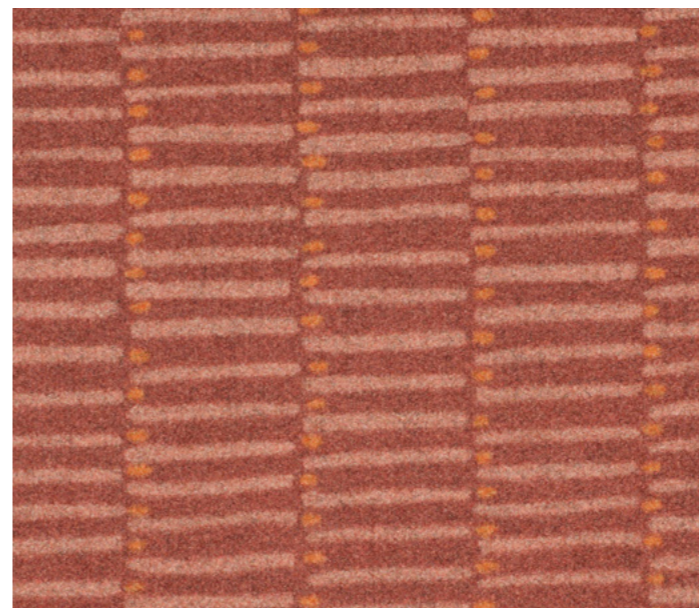
**Crosshatch**  
PMC18



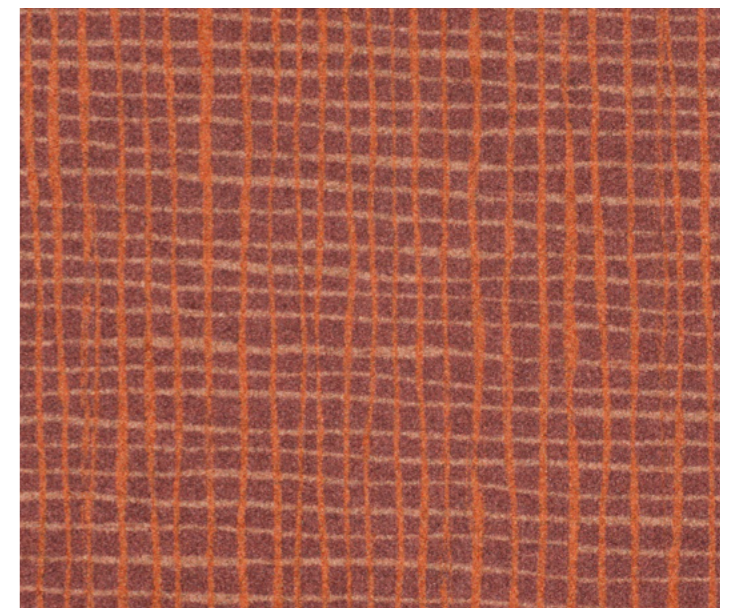
**Dot Dash**  
PMD16



**Crosshatch**  
PMC17



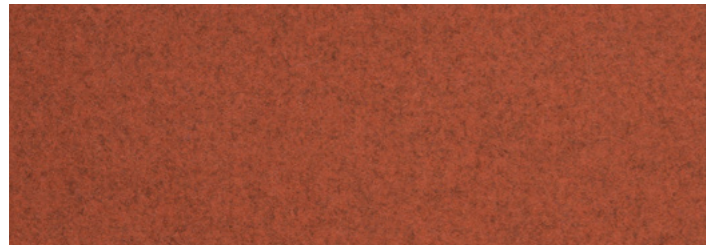
**Dot Dash**  
PMD14



**Crosshatch**  
PMC16



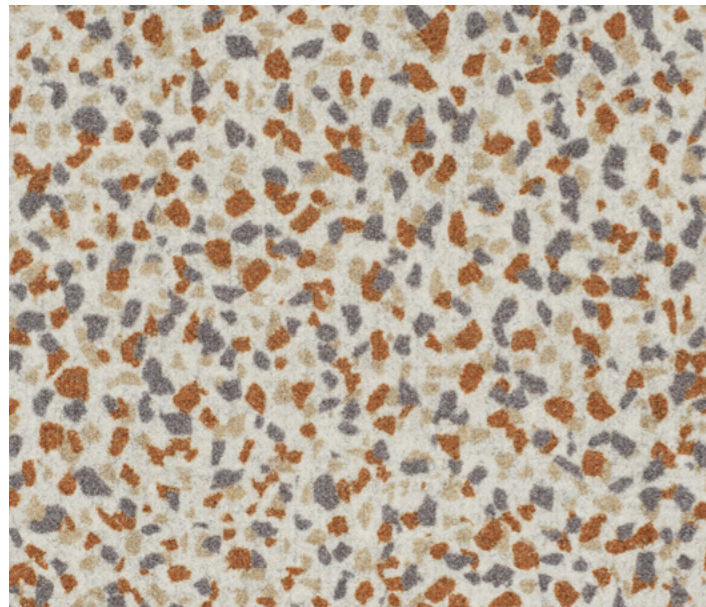
**Hula**  
PMH08



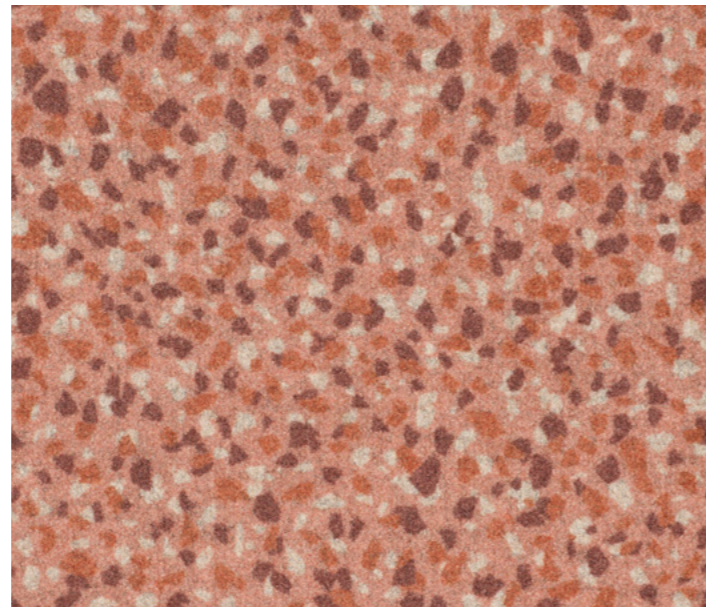
**Blazer**  
Warwick, CUZ4L



**Main Line Flax**  
Morden, MLF12

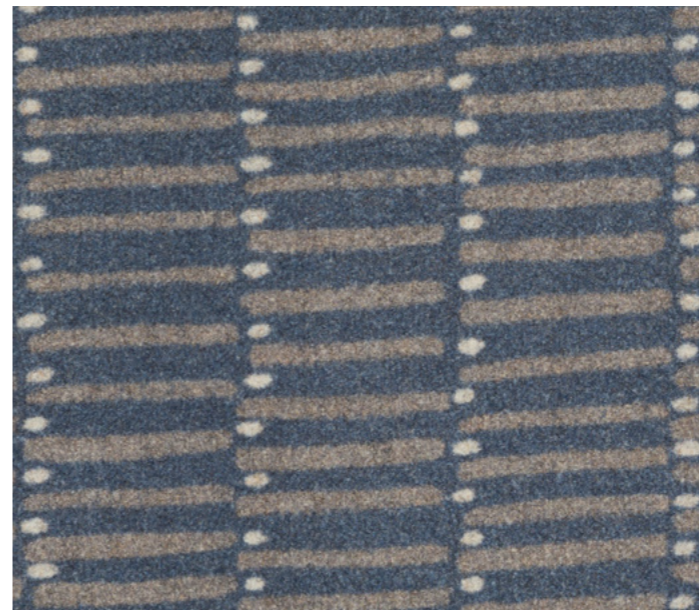


**Speckle**  
PMS14

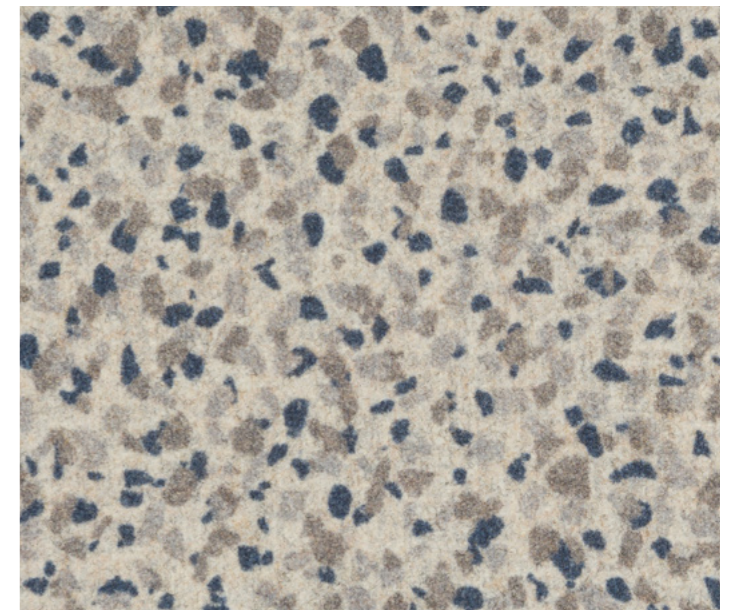


**Speckle**  
PMS15





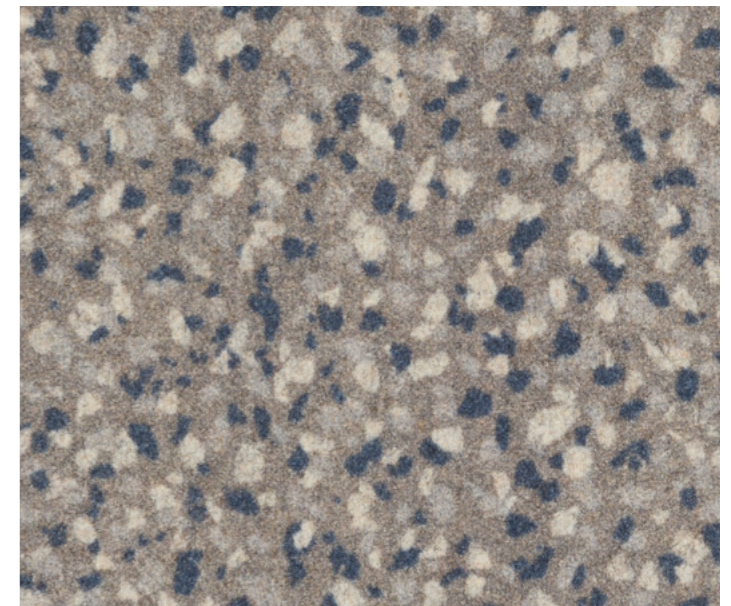
**Dot Dash**  
PMD07



**Speckle**  
PMS07



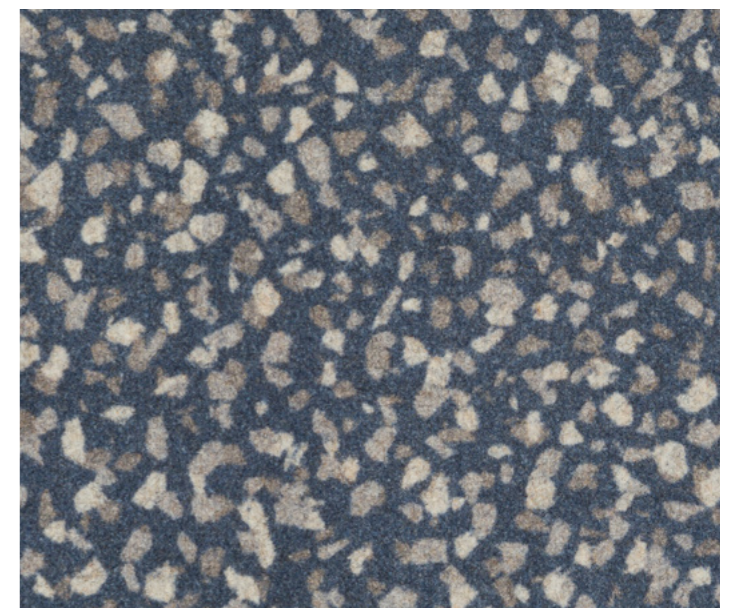
**Dot Dash**  
PMD09



**Speckle**  
PMS08



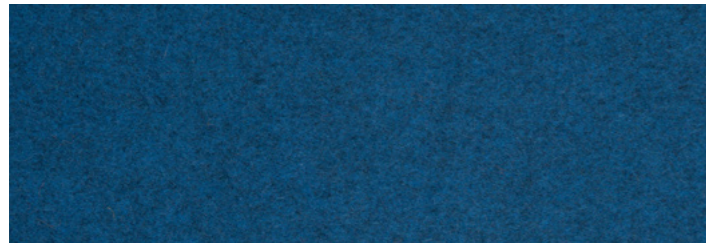
**Dot Dash**  
PMD08



**Speckle**  
PMS09



**Hula**  
PMH04



**Blazer**  
Newcastle, CUZ1W



**Main Line Flax**  
Redbridge, MLF61



**Crosshatch**  
PMC08

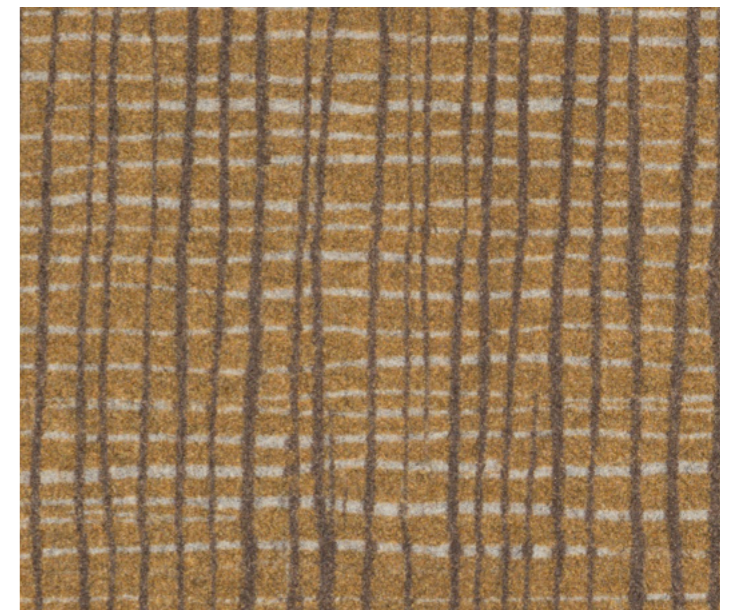


**Crosshatch**  
PMC09





**Dot Dash**  
PMD07



**Crosshatch**  
PMC12



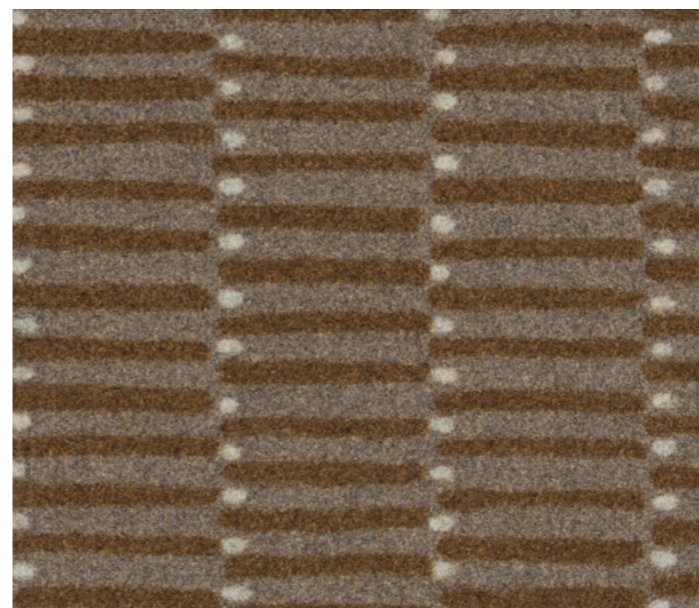
**Blazer**  
Surrey, CUZ1E



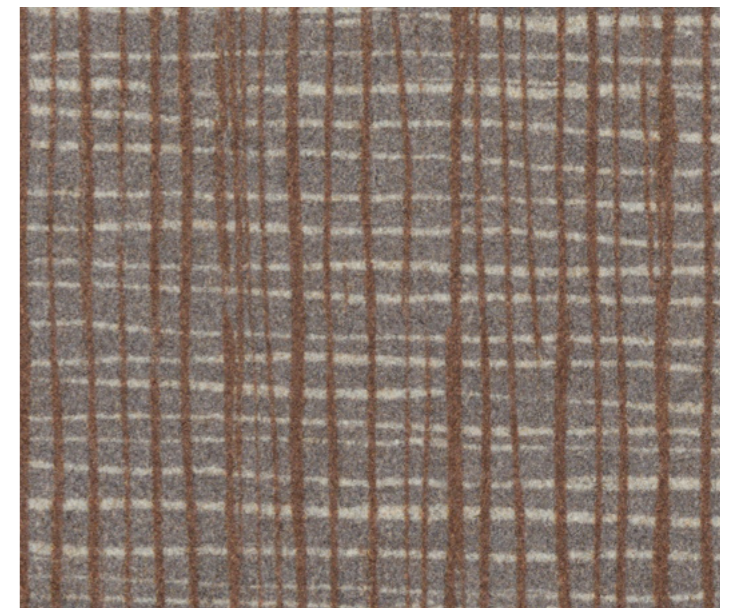
**Crosshatch**  
PMC11



**Main Line Flax**  
Bank, MLF23



**Dot Dash**  
PMD08



**Crosshatch**  
PMC10



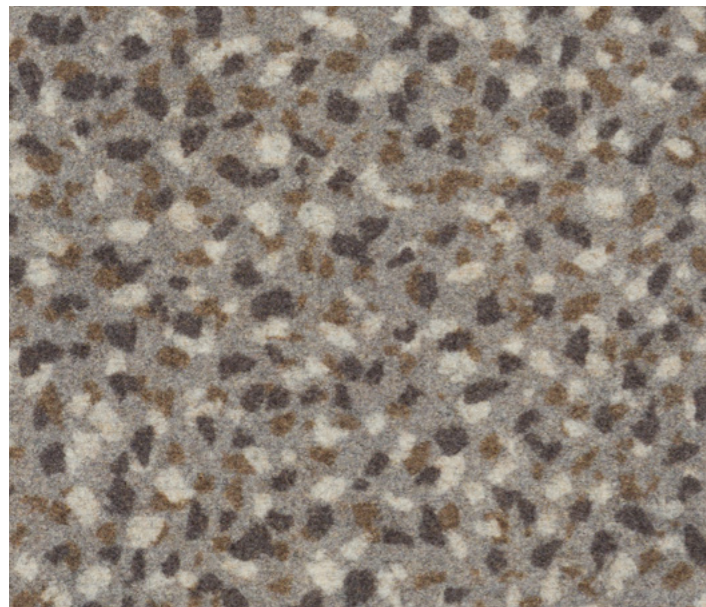
**Hula**  
PMH05



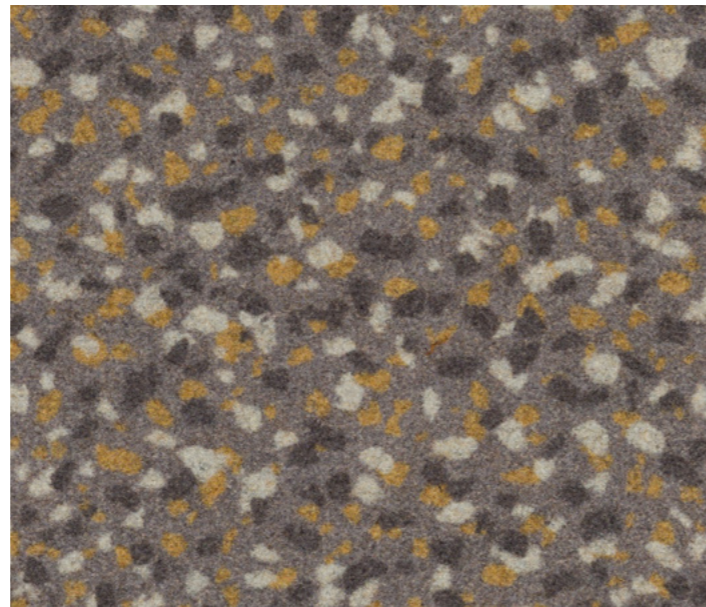
**Blazer**  
Trevelyan, CUZ31



**Main Line Flax**  
Morden, MLF12



**Speckle**  
PMS11



**Speckle**  
PMS10



### Lynn Kingdon and Kate Lawrie – in conversation

Camira's Head of Creative, Lynn Kingdon, and textile artist and designer, Kate Lawrie, have worked in tandem to portray the best of woven and digital print in Patternmaker. Click the button below to hear them in conversation together, exploring the design themes which inspire the four designs and how these have been translated through innovation in digital print on wool.

[▶ Watch Here](#)



# Patternmaker



Task seating



Soft seating



Panels



IMO FTP Code



Acoustic



Year guarantee



Curtains

## Technical Information - Q217

### Composition

100% Pure New Wool

### Environment

Certified to the EU Ecolabel

Certified to Indoor Advantage™ Gold

### Width

54 inches minimum

### Weight

13<sup>1/2</sup> oz/sq yd ±5% (20<sup>1/4</sup> oz/running yd ±5%)

### Pattern Repeat

PMC: Width: 54 inches, Length: 53 inches ±5%

PMD: Width: 54 inches, Length: 17 inches ±5%

PMH: Width: 54 inches, Length: 25 inches ±5%

PMS: Width: 54 inches, Length: 31 inches ±5%

### Abrasion Resistance\*

D4966 Martindale method, Heavy Duty Upholstery

Independently certified to ≥45,000 cycles

Covered by a full and comprehensive 5 year guarantee

(full details available)

### Color Fastness to Light

AATCC-16 (40 hours) Class 4

### Color Fastness to Crocking

AATCC-8 (Dry: 4, Wet: 3)

### Acoustic Properties

Acoustically transparent. Acoustic graphs available upon request.

### Cleaning

W/S

Clean with a water-based cleaning agent or solvent:

Depending on the stain, you can use a dry-cleaning solvent, the foam of a mild detergent, or upholstery shampoo.

### Flammability

California Technical Bulletin 117

NFPA 260 + UFAC Class 1

BS 7176 Low Hazard

ASTM E84 Class 1 or A (Adhered)

ASTM E84 Class 2 or B (Un-adhered)

IMO FTP Code (Part 8)

### With FR Treatment (Gorts):

ASTM E84 Class 1 or A (Un-adhered)

NFPA 701

IMO FTP Code (Part 7)

*Note: Flammability performance is dependent on components used. Our certificates show what substrates have been used in our tests. For composite tests customers must ensure their complete furniture meets the necessary standards.*



\*Abrasion test results exceeding ACT Performance Guidelines are not an indicator of product lifespan. Multiple factors affect fabric durability and appearance retention. We're confident in the durability of our products so we provide a robust 5 year guarantee (full details available). This product is externally certified, details of which are on our website and available from our customer services team. Batch to batch variations in shade may occur within commercial tolerances. We reserve the right to alter technical specifications without notice. The Unregistered Design Rights and the Copyright in all designs are the exclusive property of Camira Fabrics Limited.

[www.camirafabrics.com](http://www.camirafabrics.com)



Renewable  
Pure New Wool



Scan für technische Daten in Deutsch  
Scanner pour la spécification en français  
Escaneen para obtener las especificaciones en español

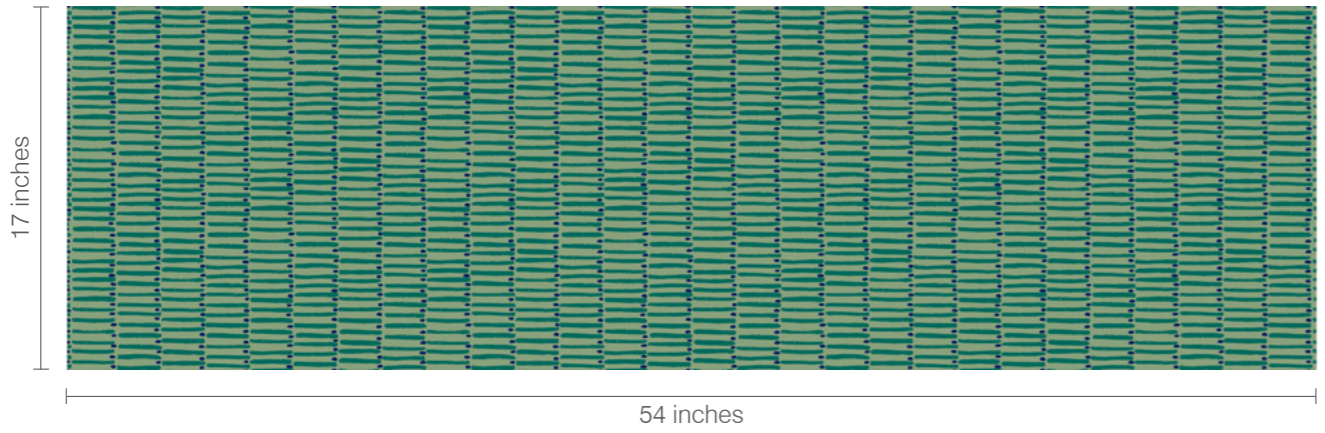
HPMC HPMD HPMH HPMS (TSR3)



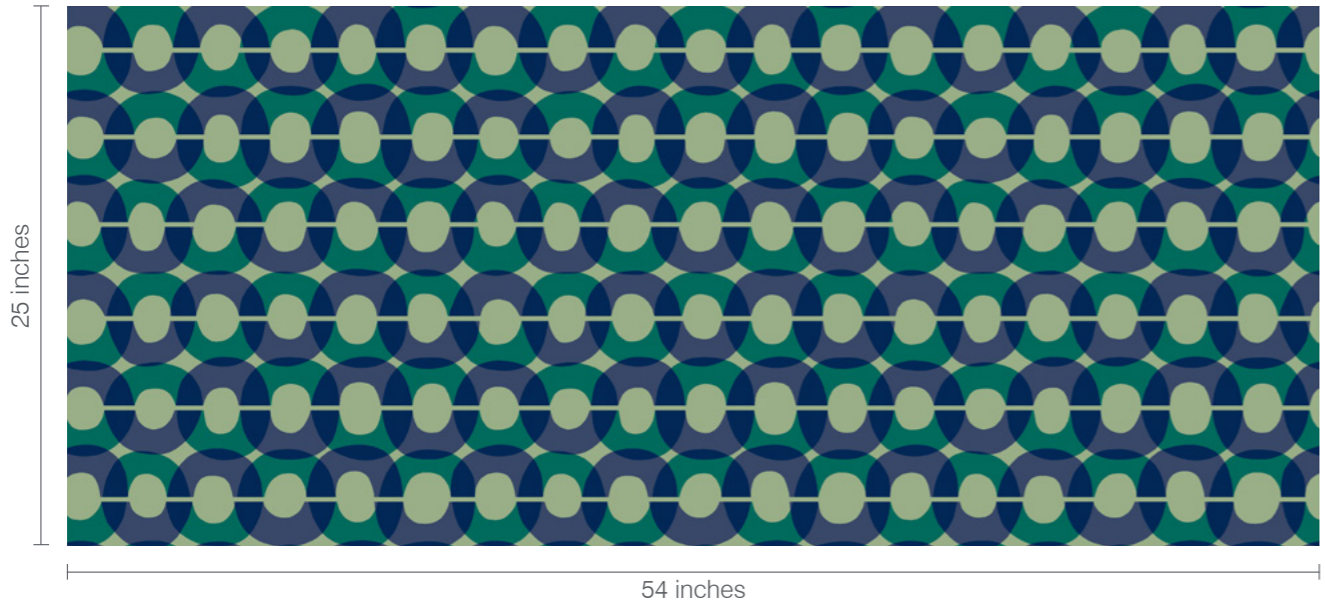
**Speckle Pattern Repeat**



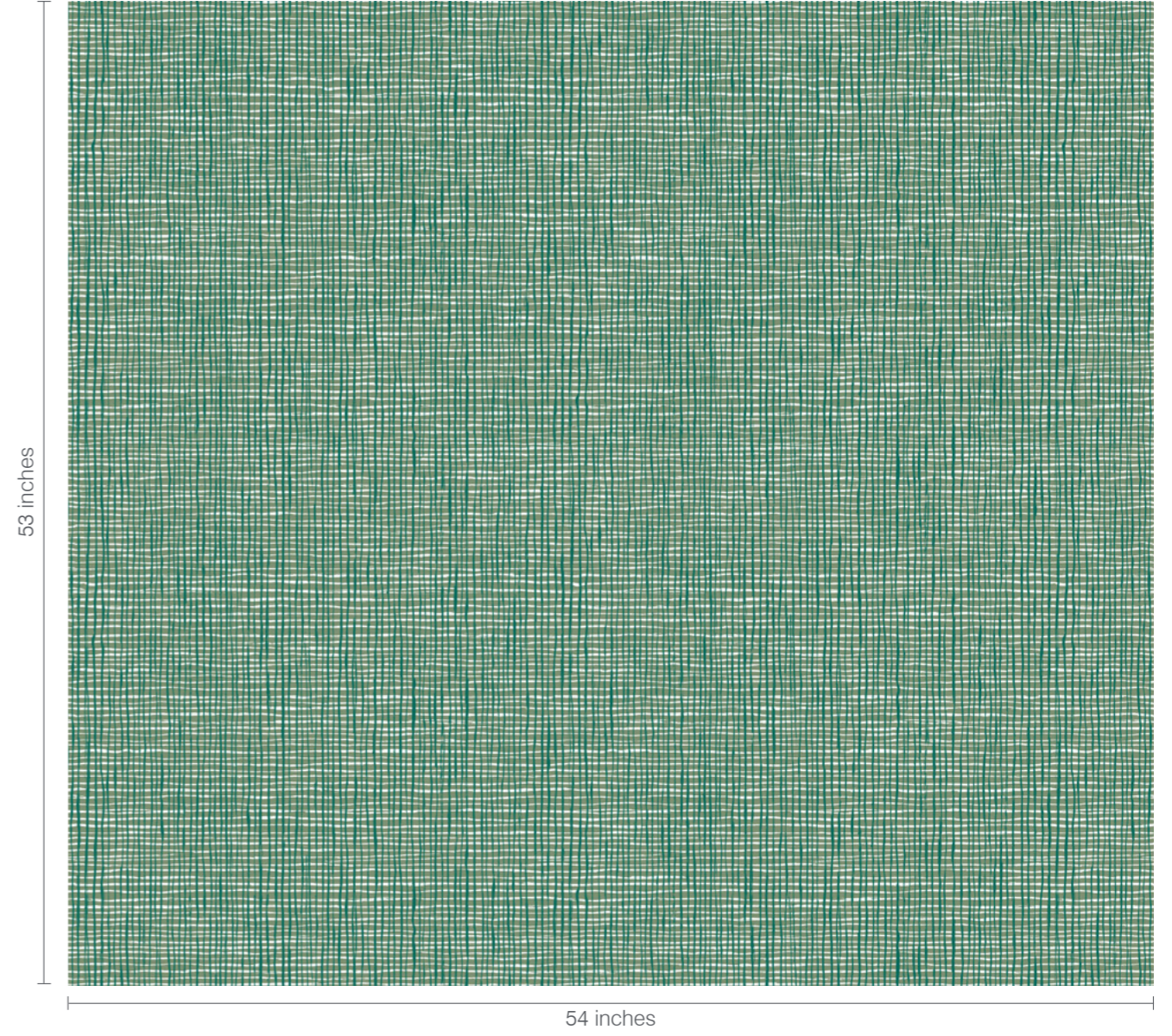
**Dot Dash Pattern Repeat**



**Hula Pattern Repeat**



**Crosshatch Pattern Repeat**



**camira**

[www.camirafabrics.com](http://www.camirafabrics.com)

